

DID YOU KNOW?



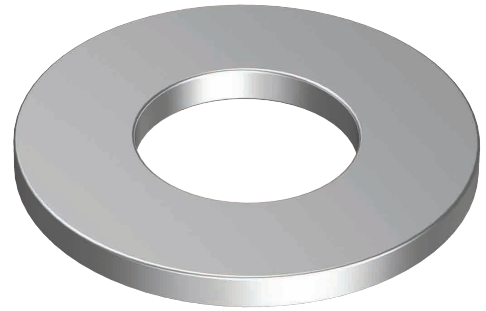
about our... **Flat Round Neptune® Washer - 316 Stainless**

**NEW
PRODUCT**

NEPTUNE® WASHER

316 STAINLESS / HEC 125A / A4-80 / 200HV

Part	Bolt Size	OD	ID	Thickness	Pack Qty
		(mm)	(mm)	(mm)	
WR16NM05	M5	9.64	5.3	0.9	200
WR16NM06	M6	11.57	6.4	1.4	100
WR16NM08	M8	15.57	8.4	1.4	100
WR16NM10	M10	19.48	10.5	1.8	100
WR16NM12	M12	23.48	13.0	2.3	100
WR16NM14	M14	27.48	15.0	2.3	100
WR16NM16	M16	29.48	17.0	2.7	100
WR16NM20	M20	36.38	21.0	2.7	100
WR16NM30	M30	55.26	31.0	3.7	20



DOWNLOAD:

This product has a **Test Certificate**
and/or **Report** available

ONLINE

Bolt Tension | Anti-Vibration | Product Reliability | Traceability

hobson.com.au **QUALITY FASTENERS SINCE 1935**

